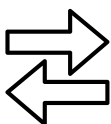




NOX ELEMENTS



Two-way
protocol

Radio control

NOX ELEMENTS 230V | NOX ELEMENTS SOLAR

VELETAS NOX ELEMENTS

The Eurotronic Sun-Wind Vane offers advanced control for awnings, available in a 230V wired version and a wireless variant with integrated solar panel. It allows two-way communication with Eurotronic motors.

REFERENCES



NOX ELEMENTS 230V | BD.002.125



NOX ELEMENTS SOLAR | BD.002.124

For bi-directional motors.

Radio frequency 433.92 Mhz.

Measurements: 63 x 35 x 13mm.

TECHNICAL CHARACTERISTICS

Name	Feeding	Battery Type	Frequency	Temperature	Measures
NOX ELEMENTS 230V	230v A.C.	-	433.92 Mhz	-10 a 50° C	217 x 89 mm
NOX ELEMENTS SOLAR	3,3v D.C.	Lithium CR2430	433.92 Mhz	-10 a 50° C	217 x 89 mm

DESCRIPTION OF BUTTONS AND SCREEN DISPLAYS



OPERATING PRINCIPLES OF THE WEATHER VANE

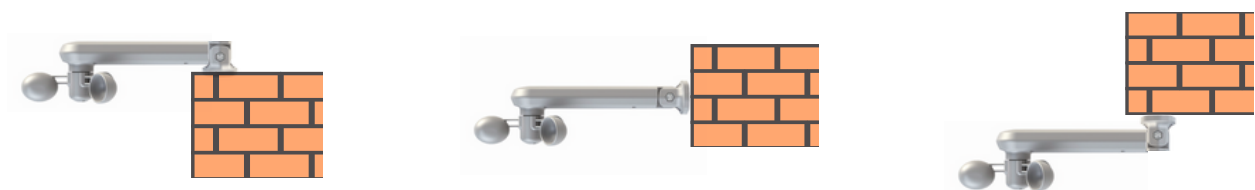
Wind:

The wind speed limit can be set between 0 and 180 km/h. If the speed exceeds the set limit for more than 3 seconds, the motor will automatically move to the upper limit switch and remain blocked for safety for 10 minutes.

Sun:

The light intensity limit can be set between 0 and 100 klux. If the intensity exceeds the set limit for more than 2 minutes, the motor will move to the lower limit switch. After 15 minutes, if the sunlight intensity drops below the set limit, the motor will move to the upper limit switch.

INSTALLATION METHODS



Weather vane orientation:

- Make sure to always install the weather vane in a horizontal position. Installing it in a vertical position may affect its operation and the accuracy of measurements.

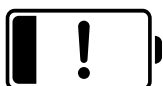
Button position:

- Orient the vane so that the button panel is always facing downwards. This ensures proper access to the controls and optimal performance of the device.

Solar exposure (for NOX ELEMENTS SOLAR weather vanes):

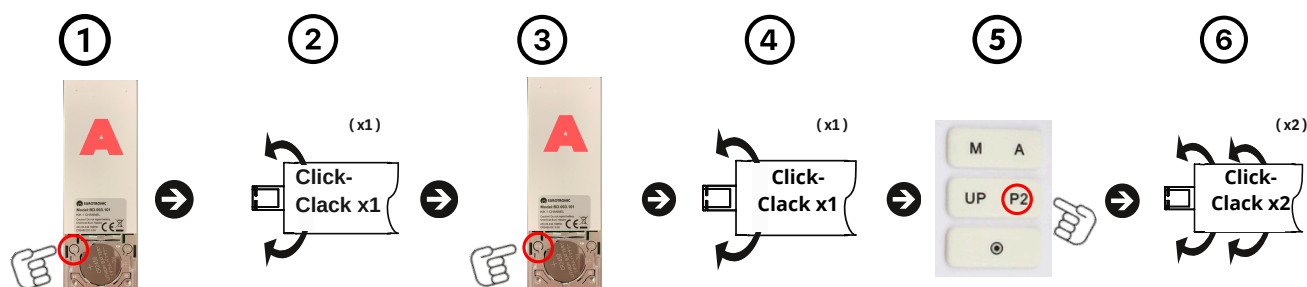
- If the model includes a solar panel, install the vane in a location where it receives direct sunlight on the panel, located at the back. Avoid partial or total shade that may affect charging and operation.

INSTRUCTIONS:



⚠ Warning: Fully charge for 8 hours before using it for the first time. Proper initial charging is essential to ensure optimal performance and battery life.

1. LINK THE WEATHER VANE



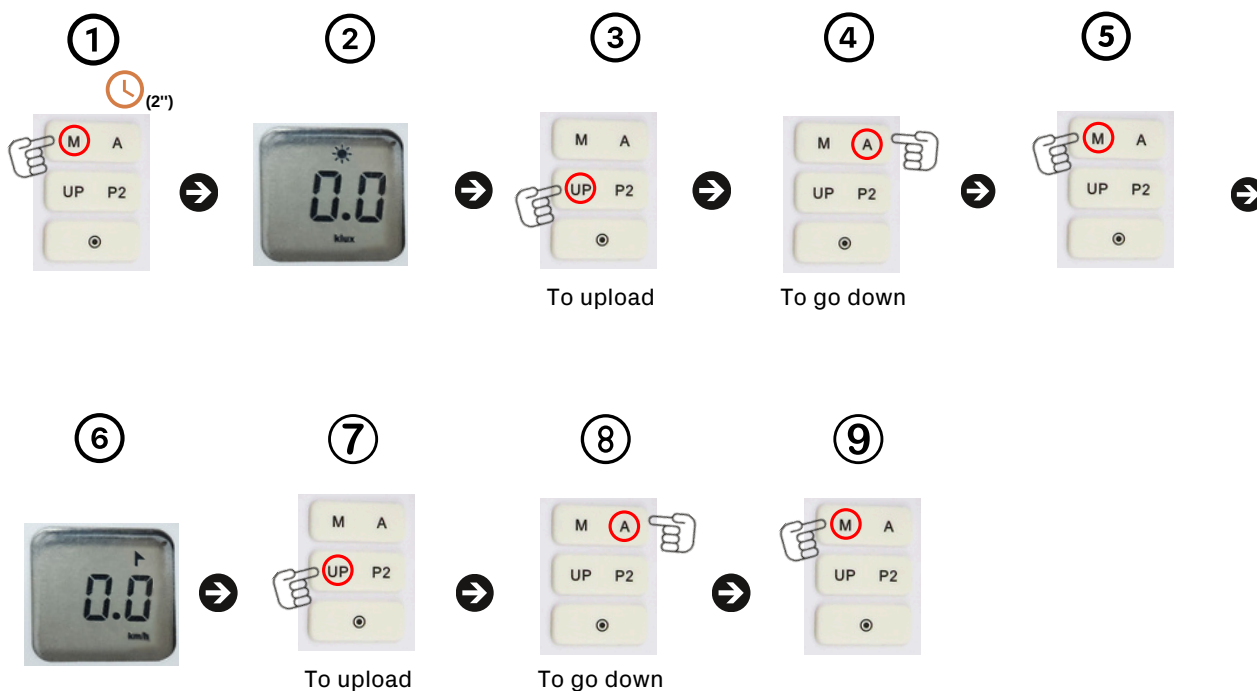
Procedure:

1. Press the button (P2) located behind the main transmitter (A).
2. The motor will make a CLICK-CLACK (x1) and a beep (x1).
3. We will press the button (P2) of the same transmitter (A) again.
4. The motor will make a "CLICK-CLACK" sound (x1) and a beep sound (x1).
5. Then press the (P2) button on the vane to confirm.
6. The motor will make two "CLICK-CLACK" sounds (x2) and three beeps (x3).

2. AUTOMATIC SUN FUNCTION



3. SETTING MAXIMUM SOL VALUES



Procedure:

1. Press the (M) button for two seconds (2") to change the light intensity limit.
2. The screen will turn on in flashing mode with the sun symbol.
3. Use the "UP"(+) button to go up.
4. Press "A"(-) to go down.
5. Press the (M) button again to access the wind speed limit setting.
6. The screen will change to flashing mode with the wind symbol.
7. Use the "UP"(+) button to go up.
8. Press "A"(-) to go down.
9. Press the (M) button again to finish.



www.eurotronic-europe.com

C/Pica d'Estats, 108-118 Poligono Industrial Sant Isidre
08272 Sant Fruitós de Bages (Barcelona) SPAIN

pedidos@eurotronic-europe.com Tel: +34 932 420 108